



## CT-003M

### Applications

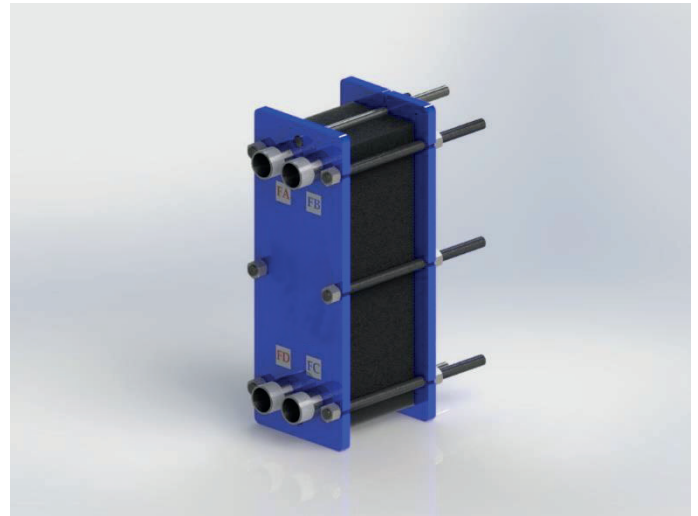
- Biotech and Pharmaceutical
- Steel
- Marine and Transportation
- Energy / Power and Utilities
- Home and Personal Care
- Food, Dairy and Beverage Industry
- HVAC
- Pulp and Paper
- Chemicals
- Mining, Minerals and Pigments
- Machinery and Manufacturing Industry
- Refrigeration
- Water and Waste Treatment
- Semiconductor and Electronics

### Benefits

- High Energy Efficiency
- Low Operating Cost
- Flexible Configuration
- Replaceable Heat Transfer Area
- Easy to Install, Easy to Remove and Service
- Improved Design
- Automatic Cleaning System
- CONSULTRA™ Warranty and Service Assurance Features

### Features

- CONSULTRA™ Practice (Hang-On Type) Gasket
- Nut Fixed to Stud
- Stainless Steel / Steel
- Internal Thread / External Thread
- PN10, PN16 etc. Suitable for Pressure Class



### Increasing Performance with CONSULTRA™ Assurance

With our comprehensive service portfolio, CONSULTRA™ ensures the best performance for your product requirements throughout its physical life. CONSULTRA™ assures you with material quality, large spare parts stock, expert staff and competent after-sales services.

### Start-up

- Installation
- Installation Supervision

### Support

- Special Stock
- Technical Documentation
- Support to Phone
- Troubleshooting

### Maintenance

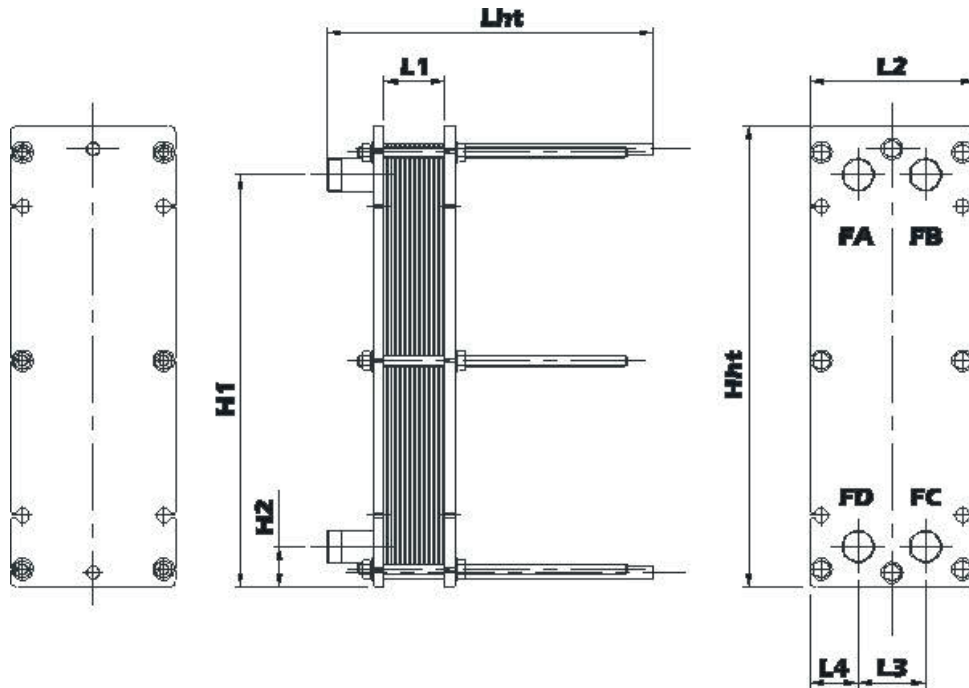
- Cleaning, Renovation and Repair Services
- Service Vehicles Supply
- Spare Part Support

### Required for The Offer

- Fluid Type
- Inlet – Outlet Temperature and Capacity
- Flow Rate or Capacity
- Fluid Thermodynamic Properties (in Special Fluids)
- Working Pressure
- Maximum Allowable Pressure Loss



### DIMENSIONS



|               |                                 |    |            |        |    |
|---------------|---------------------------------|----|------------|--------|----|
| <b>L2</b>     | 180,00                          | mm | <b>Hht</b> | 480,00 | mm |
| <b>L3</b>     | 60,00                           | mm | <b>H1</b>  | 419,00 | mm |
| <b>L4</b>     | 60,00                           | mm | <b>H2</b>  | 61,00  | mm |
| <b>L1/Lht</b> | Depends on the number of plates |    |            |        |    |

### Connections

|                           |                  |
|---------------------------|------------------|
| <b>External Thread</b>    | ISO 228 – G 1 ¼" |
| <b>Internal Thread</b>    | ISO 228 – G 1 ¼" |
| <b>Fitting Connection</b> | ISO 4144 – 1 ¼"  |

### DETAILS

|                                 |                    |
|---------------------------------|--------------------|
| <b>Design Pressures (bar)</b>   | 10, 16, 25         |
| <b>Design Temperatures (°C)</b> | 120, 150, 165, 180 |

### Material

|                            |                                                   |
|----------------------------|---------------------------------------------------|
| <b>Heat Transfer Plate</b> | AISI316L, AISI304, C276, Titanium, SMO, Hastelloy |
| <b>Sealing Gasket</b>      | NBR, HNBR, EPDM, FKM-A/G                          |
| <b>Connections</b>         | Steel, Stainless Steel                            |
| <b>Frames</b>              | Epoxy Painted Steel, Stainless Steel              |