



CT-006M & CT-006MM

Applications

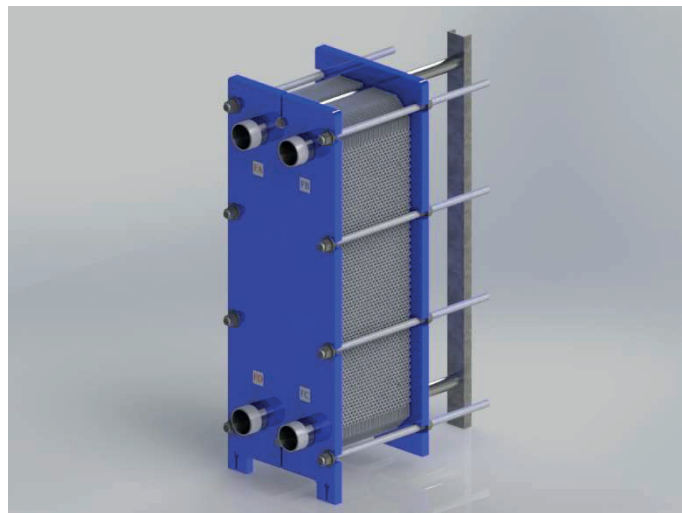
- Biotech and Pharmaceutical
- Steel
- Marine and Transportation
- Energy / Power and Utilities
- Home and Personal Care
- Food, Dairy and Beverage Industry
- HVAC
- Pulp and Paper
- Chemicals
- Mining, Minerals and Pigments
- Machinery and Manufacturing Industry
- Refrigeration
- Water and Waste Treatment
- Semiconductor and Electronics

Benefits

- High Energy Efficiency
- Low Operating Cost
- Flexible Configuration
- Replaceable Heat Transfer Area
- Easy to Install, Easy to Remove and Service
- Improved Design
- Automatic Cleaning System
- CONSULTRA™ Warranty and Service Assurance Features

Features

- CONSULTRA™ Practice (Hang-On Type) Gasket
- Nut Fixed to Stud
- Stainless Steel / Steel
- Internal Thread / External Thread



PN10, PN16 etc. Suitable for Pressure Class

Increasing Performance with CONSULTRA™ Assurance

With our comprehensive service portfolio, CONSULTRA™ ensures the best performance for your product requirements throughout its physical life. CONSULTRA™ assures you with material quality, large spare parts stock, expert staff and competent after-sales services.

Start-up

- Installation
- Installation Supervision

Support

- Special Stock
- Technical Documentation
- Support to Phone
- Troubleshooting

Maintenance

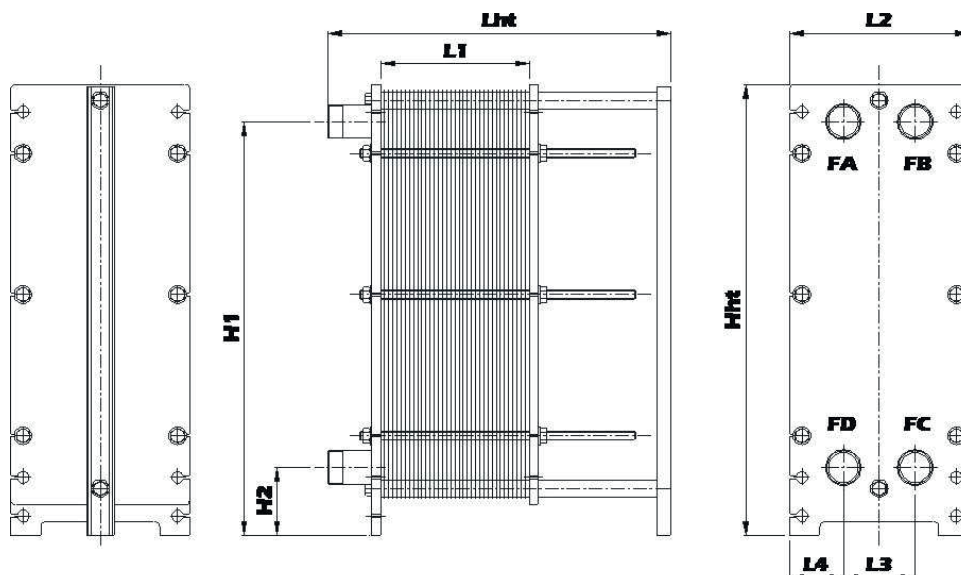
- Cleaning, Renovation and Repair Services
- Service Vehicles Supply
- Spare Part Support

Required for The Offer

- Fluid Type
- Inlet – Outlet Temperature and Capacity
- Flow Rate or Capacity
- Fluid Thermodynamic Properties (in Special Fluids)
- Working Pressure
- Maximum Allowable Pressure Loss



DIMENSIONS



L2	320,00	mm	Hht	880,00	mm
L3	140,00	mm	H1	779,50	mm
L4	90,00	mm	H2	139,50	mm
L1/Lht	Depends on the number of plates				

Connections	
External Thread	ISO 228 – G 2"
Fitting Connection	ISO 4144 – 2"
Flange Connection	EN 1092-1 DN50 / ASME B16.5 NPS 2"

DETAILS

Working Conditions	
Design Pressures (bar)	10, 16, 25
Design Temperatures (°C)	120, 150, 165, 180

Material	
Heat Transfer Plate	AISI316L, AISI304, C276, Titanium, SMO, Hastelloy
Sealing Gasket	NBR, HNBR, EPDM, FKM-A/G
Connections	Steel, Stainless Steel, Rubber Line
Frame	Epoxy Painted Steel, Stainless Steel