



## CT-015MM & CT-015MB

### Applications

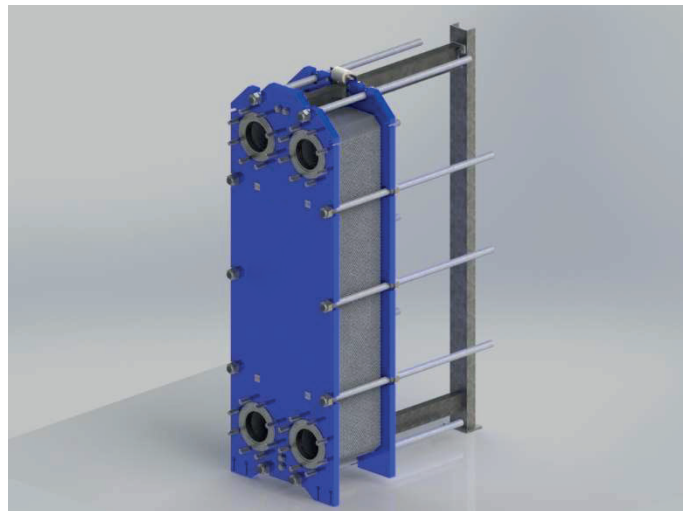
- Biotech and Pharmaceutical
- Steel
- Marine and Transportation
- Energy / Power and Utilities
- Home and Personal Care
- Food, Dairy and Beverage Industry
- HVAC
- Pulp and Paper
- Chemicals
- Mining, Minerals and Pigments
- Machinery and Manufacturing Industry
- Refrigeration
- Water and Waste Treatment
- Semiconductor and Electronics

### Benefits

- High Energy Efficiency
- Low Operating Cost
- Flexible Configuration
- Replaceable Heat Transfer Area
- Easy to Install, Easy to Remove and Service
- Improved Design
- Automatic Cleaning System
- CONSULTRA™ Warranty and Service Assurance Features

### Features

- CONSULTRA™ Practice (Hang-On Type) Gasket
- Nut Fixed to Stud
- Stainless Steel / Steel
- Internal Thread / External Thread



PN10, PN16 etc. Suitable for Pressure Class

### Increasing Performance with CONSULTRA™ Assurance

With our comprehensive service portfolio, CONSULTRA™ ensures the best performance for your product requirements throughout its physical life. CONSULTRA™ assures you with material quality, large spare parts stock, expert staff and competent after-sales services.

### Start-up

- Installation
- Installation Supervision

### Support

- Special Stock
- Technical Documentation
- Support to Phone
- Troubleshooting

### Maintenance

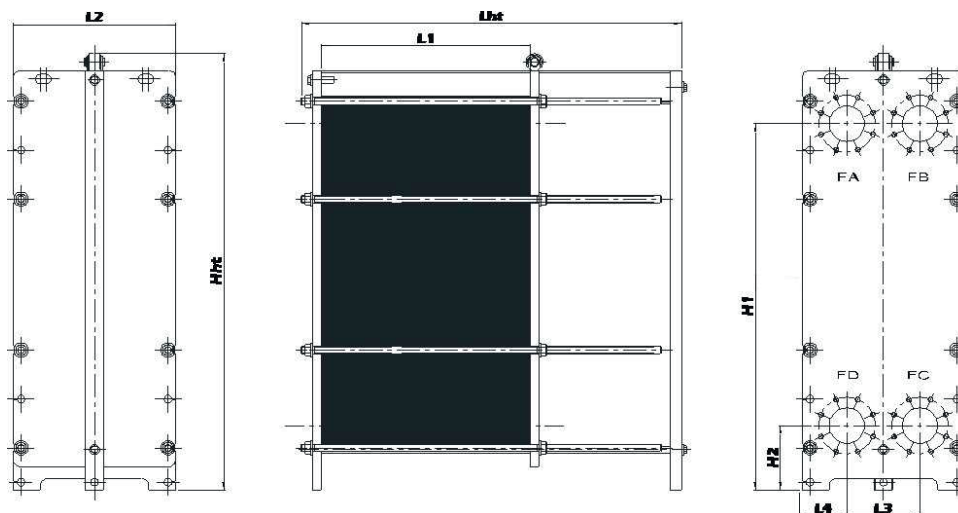
- Cleaning, Renovation and Repair Services
- Service Vehicles Supply
- Spare Part Support

### Required for The Offer

- Fluid Type
- Inlet – Outlet Temperature and Capacity
- Flow Rate or Capacity
- Fluid Thermodynamic Properties (in Special Fluids)
- Working Pressure
- Maximum Allowable Pressure Loss



## DIMENSIONS



<b>L2</b>	610,00	mm	<b>Hht</b>	1815,00	mm
<b>L3</b>	298,00	mm	<b>H1</b>	1570,00	mm
<b>L4</b>	156,00	mm	<b>H2</b>	276,00	mm
<b>L1/Lht</b>	Depends on the number of plates				

## Connections

Connections	
<b>Flange Connection</b>	EN 1092-1 DN150

## DETAILS

### Working Conditions

<b>Design Pressures (bar)</b>	10, 16, 25
<b>Design Temperatures (°C)</b>	120, 150, 165, 180

### Material

<b>Heat Transfer Plate</b>	AISI316L, AISI304, C276, Titanium, SMO, Hastelloy
<b>Sealing Gasket</b>	NBR, HNBR, EPDM, FKM-A/G
<b>Connections</b>	Steel, Stainless Steel, Rubber Line
<b>Frame</b>	Epoxy Painted Steel, Stainless Steel